

CPU

Note: AFC > 3G_TX_VGA > APC > 3G_VBIAS

REVISION RECORD			
LTR	ECO NO:	APPROVED:	DATE:

D

C

B

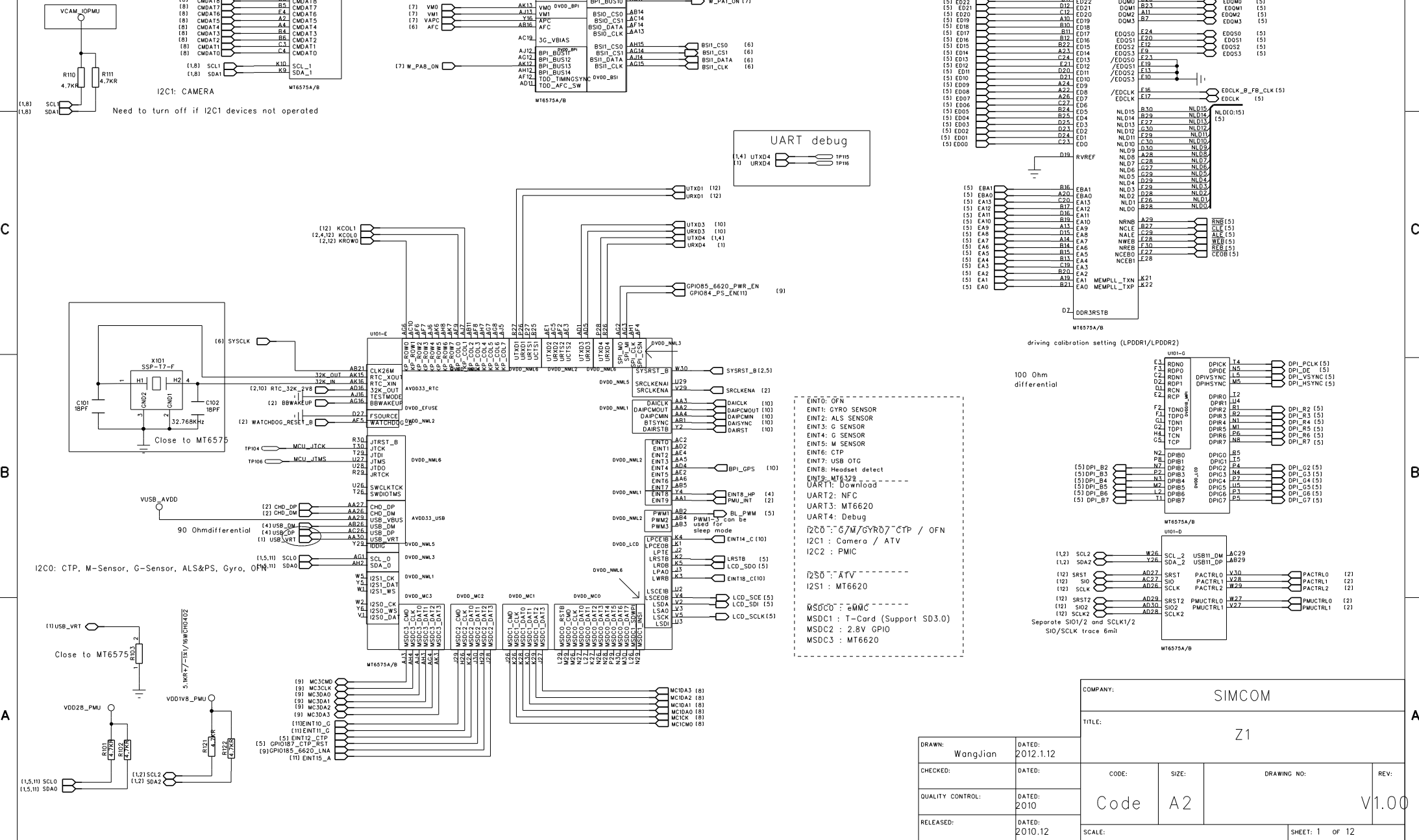
A

D

C

B

A

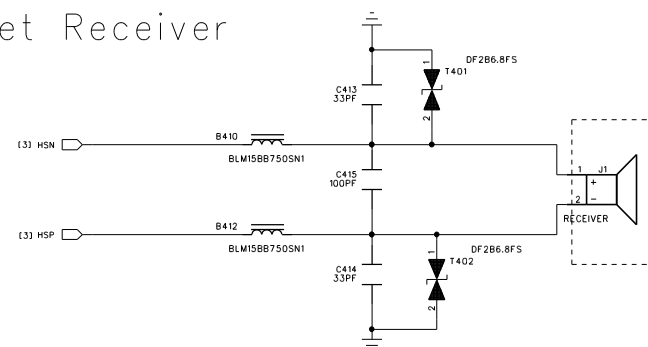


COMPANY:		SIMCOM	
TITLE:		Z1	
CODE:	SIZE:	DRAWING NO:	REV:
Code	A2	POWER	V1.0
SCALE:		SHEET: 3 OF 12	

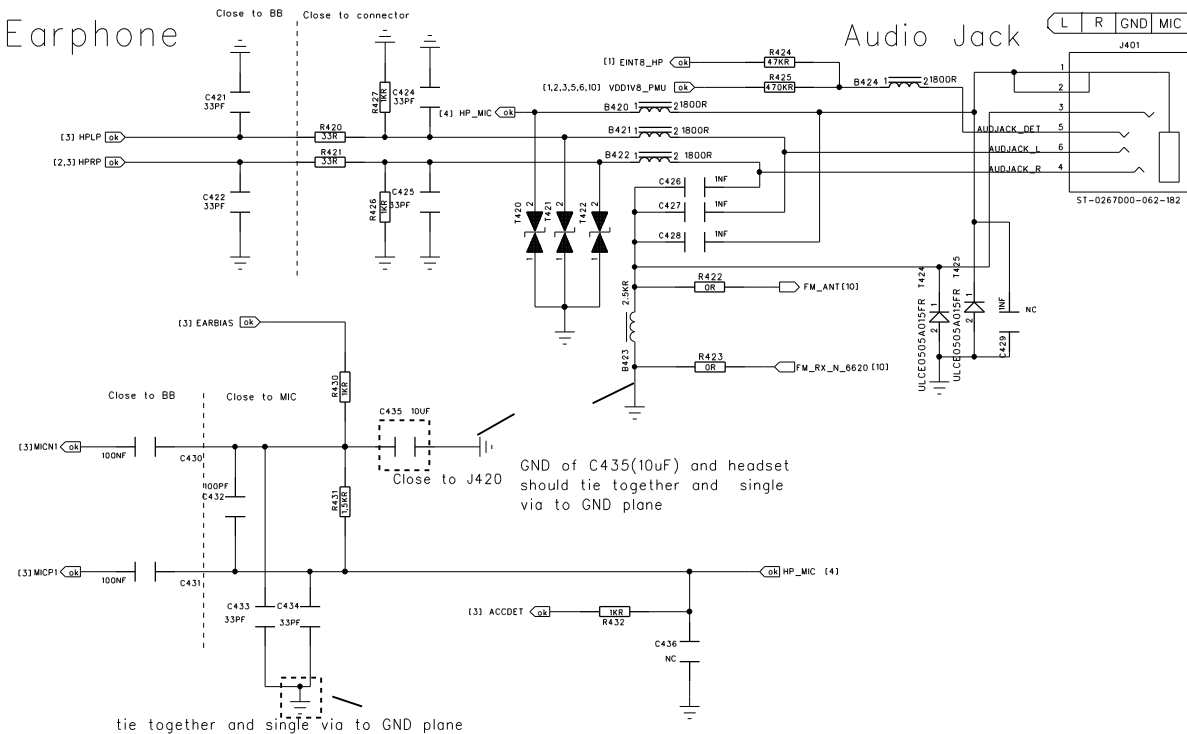


B

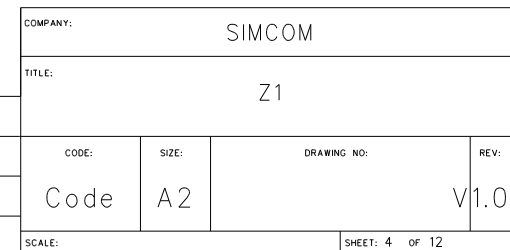
et Receiver

D

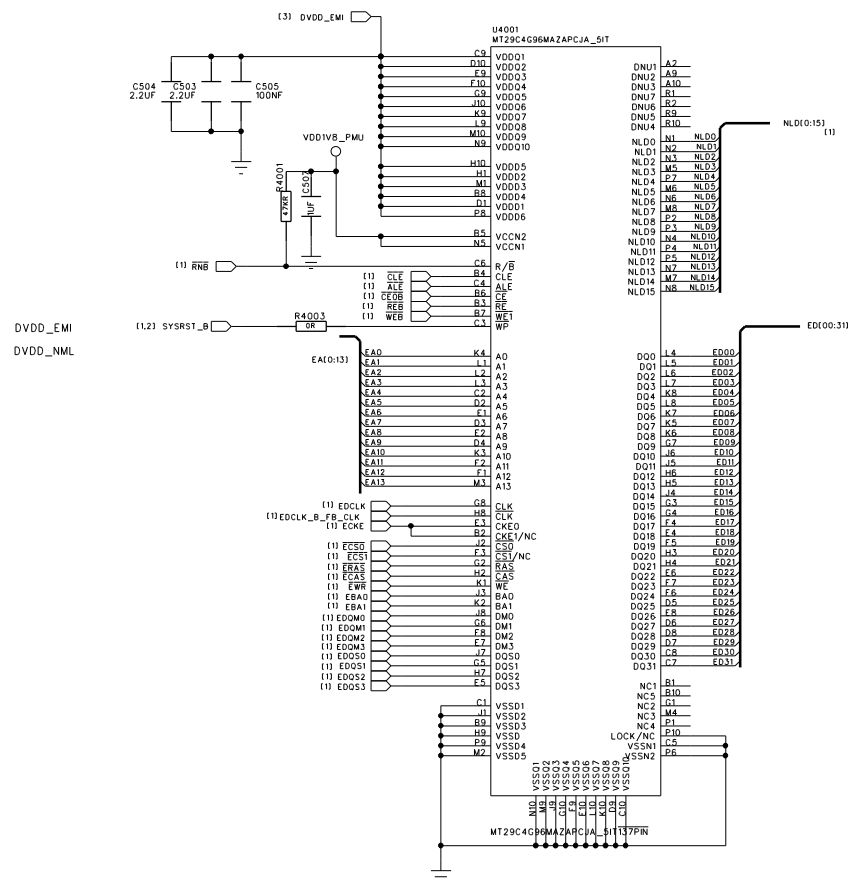
Earphone



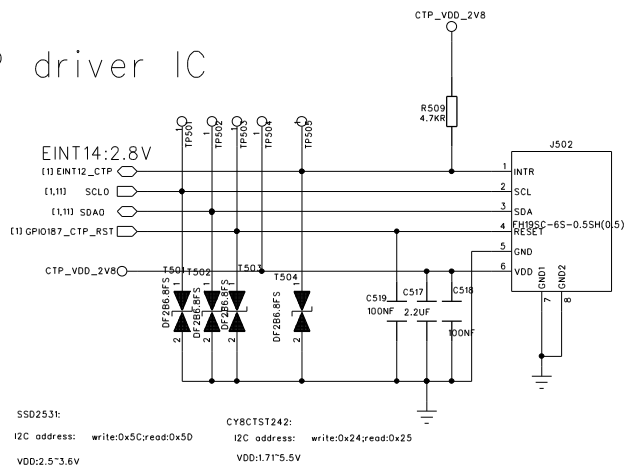
tie together and single via to GND plane



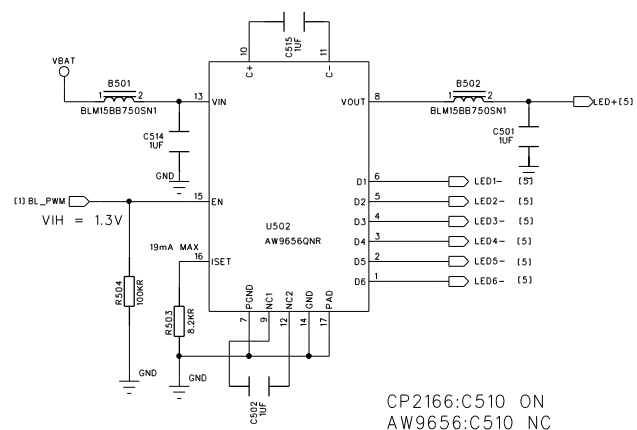
(eMMC 4GB NAND + x32 4Gbit LP-DDR1 153balls 13*11.5mm)



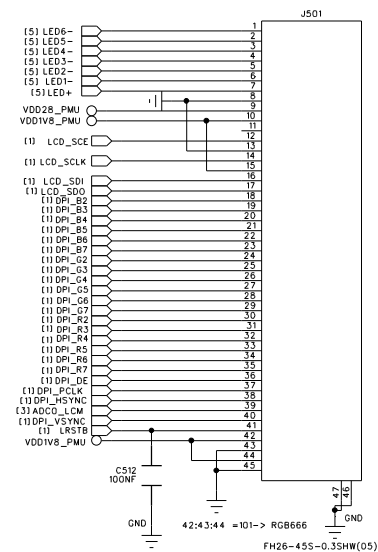
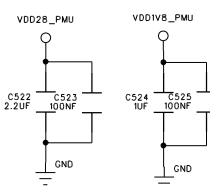
CTP driver IC



BACKLIGHT DRIVER



LCM Connector



REVISION RECORD			
LTR	ECO NO:	APPROVED:	DATE:

COMPANY:		SIMCOM	
TITLE:		Z1	
CODE:	SIZE:	DRAWING NO:	REV:
Code	A2	Memory & LCD	V1.00
SCALE:		SHEET: 5 of 12	

D

C

A

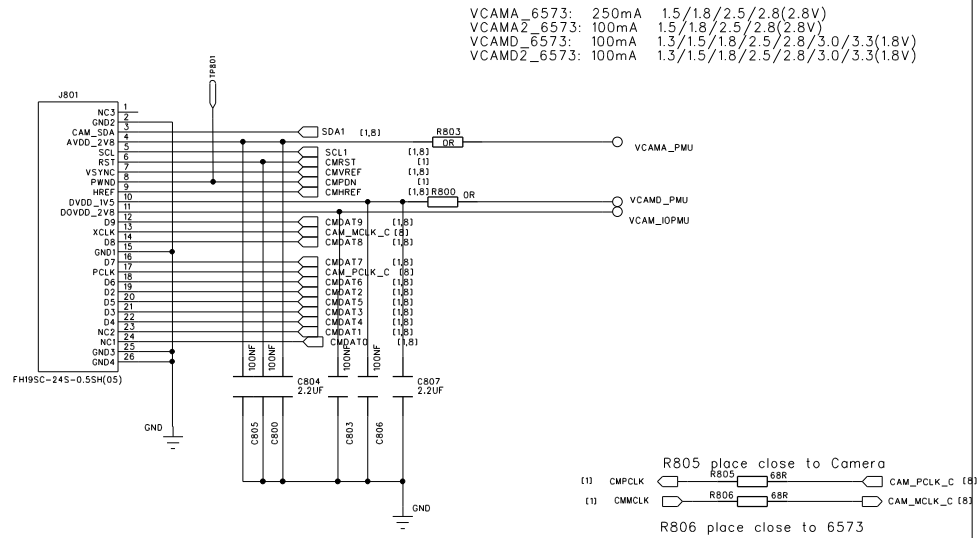
CODE:	SIZE:	DRAWING NO:	REV:
Code	A2	RF TRX	V1.0
SCALE:		SHEET: 6 OF 12	



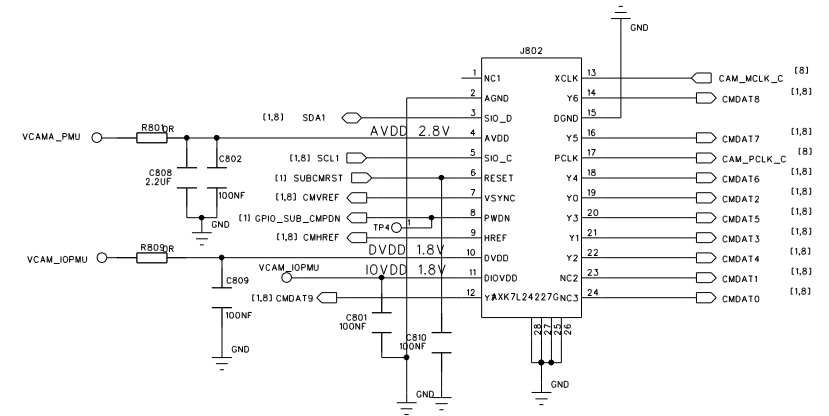
COMPANY:		SIMCOM	
TITLE:		Z1	
CODE:	SIZE:	DRAWING NO:	REV:
Code	A2	RF PA	V1.0
SCALE:		SHEET: 7 OF 12	

CODE:	SIZE:	DRAWING NO:	REV:
Code	A2	RF PA	V1.00
SCALE:		SHEET: 7 OF 12	

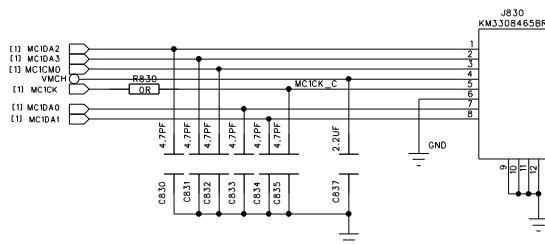
Main Camera



Sub Camera



TFlash card



REVISION RECORD			
LTR	ECO NO:	APPROVED:	DATE:

COMPANY: SIMCOM			
TITLE: Z1			
DRAWN: Wangjian	DATED: 2012.1.12		
CHECKED:	DATED:	CODE:	SIZE:
QUALITY CONTROL:	DATED: 2010	DRAWING NO:	
RELEASED:	DATED: 2010.12	Camera & TF	
SCALE:		SHEET: 8 of 12	

V1.00

ANT

MT6620

clock setting		XTEST	EEDI	ANTSEL_3	
	2.8V TCXO or OSC	0	0	0	Default
	1.8V TCXO or OSC	0	1	0	
	XTAL	0	0	1	
	external clock mode	0	1	1	

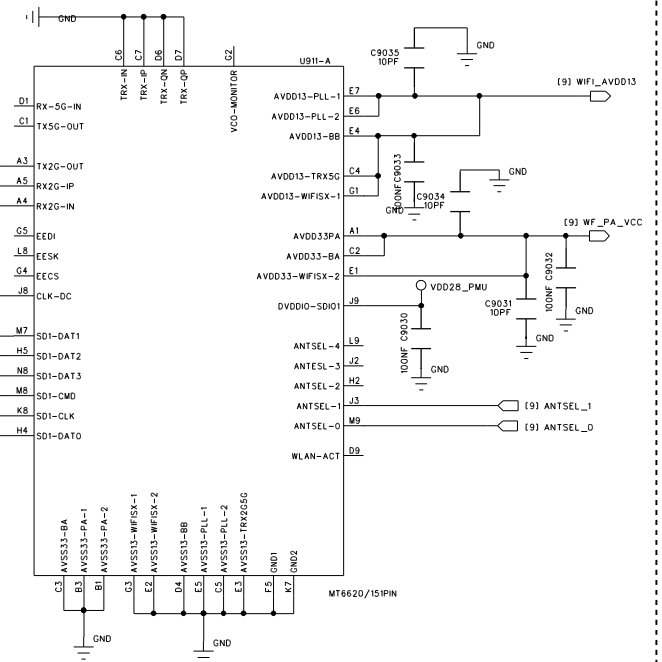
WIFI host interface		XTEST	ANTSEL_2	ANTSEL_1	
	WIFI :SDIO1	0	0	0	Default
	WIFI :SDIO2	0	0	1	
	WIFI :SPI	0	1	0	
	WIFI :reserved	0	1	1	

BT/common host interface		XTEST	ANTSEL_0		
	UART1	0	0		Default
	SDIO2	0	1		

ANTSEL_0/1,XTEST in S500

COMPANY: SIMCOM				
TITLE: Z1				
DRAWN: Wangjian	DATED: 2012.1.12			
CHECKED:	DATED:	CODE:	SIZE: A2	DRAWING NO:
QUALITY CONTROL:	DATED: 2010			
RELEASED:	DATED: 2010.12			
SCALE:				SHEET: 9 of 12

REVISION RECORD			
LTR	ECO NO:	APPROVED:	DATE:



6

5

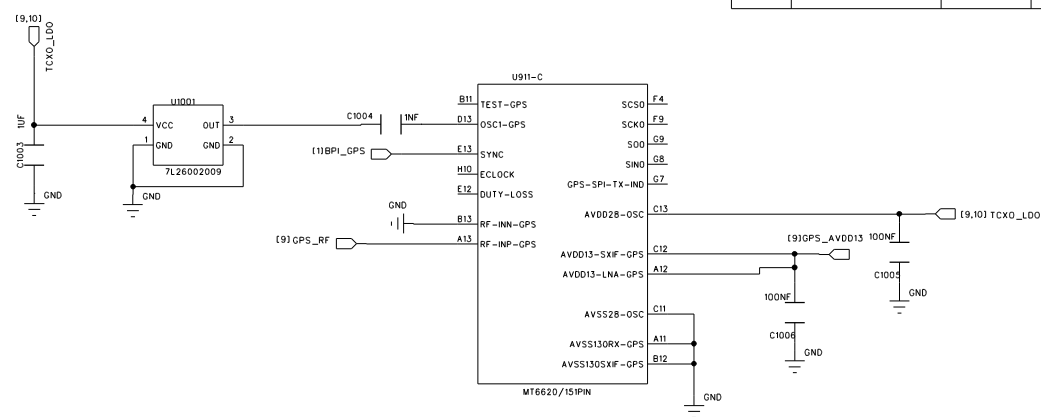
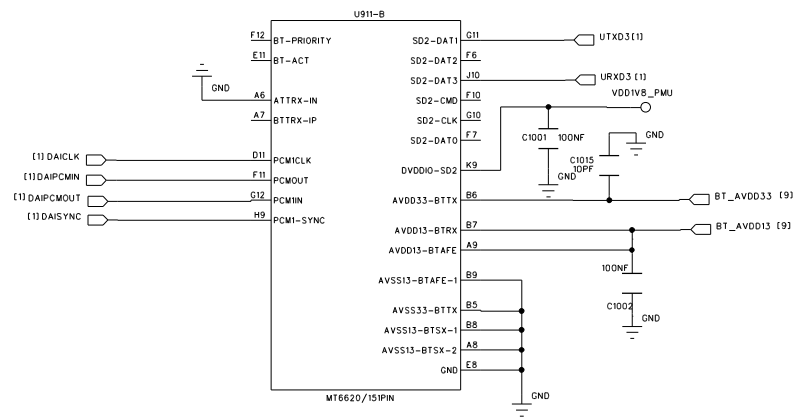
4

3

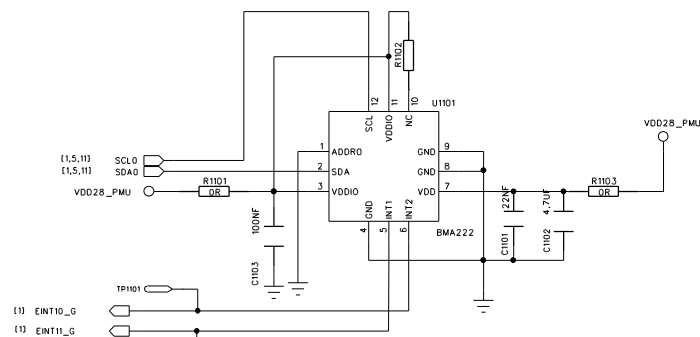
2

1

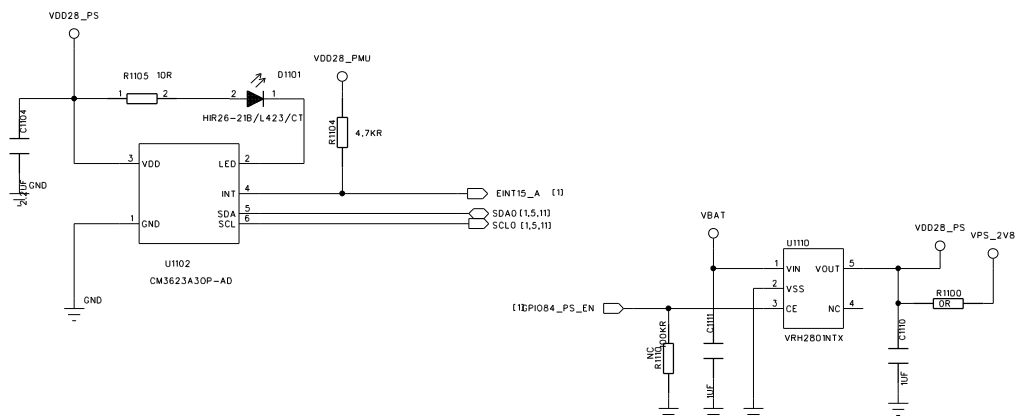
REVISION RECORD			
LTR	ECO NO:	APPROVED:	DATE:



G SENSOR



BMA250 I2C address:(write:0x30;read:0x31)
BMA222 I2C address:(write:0x10;read:0x11)
MC3430 I2C address:(write:0x98;read:0x99)



REVISION RECORD			
LTR	ECO NO:	APPROVED:	DATE:

COMPANY: SIMCOM			
TITLE: Z1			
DRAWN: WangJian	DATED: 2012.1.12	CODE:	SIZE: A2
CHECKED:	DATED:	DRAWING NO:	REV: V1.00
QUALITY CONTROL:	DATED: 2010	Sensor	
RELEASED:	DATED: 2010.12	SCALE:	SHEET: 11 of 12

		COMPANY:				SIMCOM		
		TITLE:						Z1
		DRAWN:	Wangjian	DATED:	2012.1.12			
		CHECKED:		DATED:		CODE:	SIZE:	DRAWING NO:
QUALITY CONTROL:		DATED:	2010	Code	A2	KEY & Sub IO & SIM Card	V1.00	
RELEASED:		DATED:	2010.12	SCALE:			SHEET: 12 of 12	