

# Mac Quick Start Manual

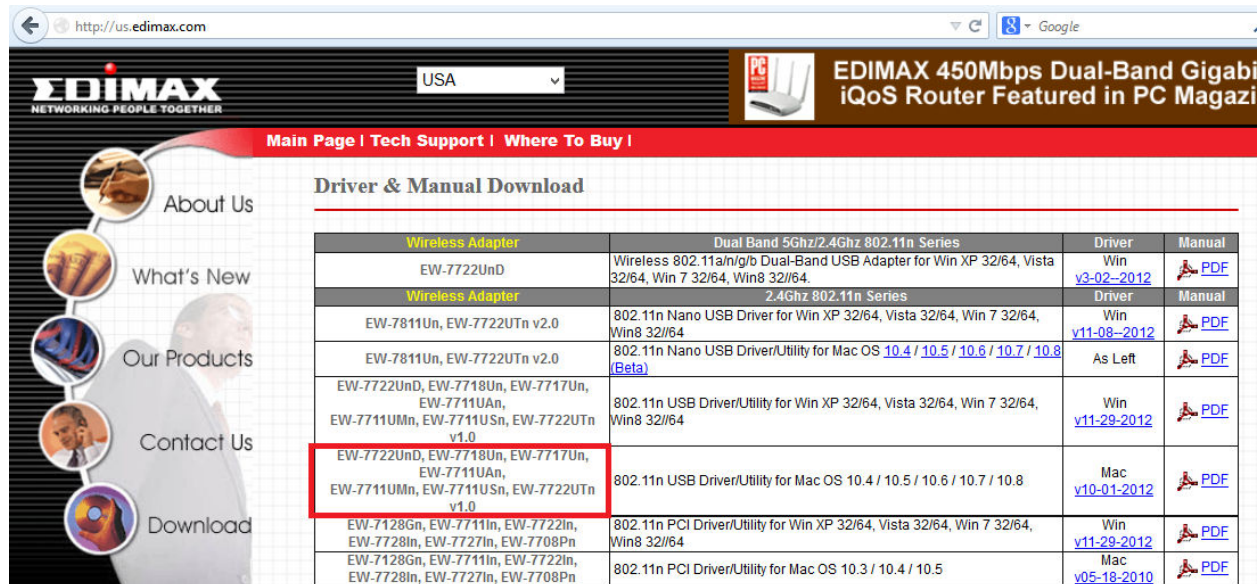
Congratulations on your purchase of the Edimax Wireless 802.11n products. It is the best in quality, performance, and cost-effectiveness, and we back them up with great technical support. We are committed to making you a success because our success depends on yours.

This is a detailed step-by-step installation instruction for Mac OSX 10.7 (Lion) and it is basically the same for OSX 10.8(Mountain Lion), OSX 10.6 (Snow Leopard), and OSX 10.5 (Leopard).

Assumptions:

1. You have the Edimax EW-77xx series Wireless adapter (USB, Cardbus, or PCI). Do not plug the Edimax USB adapter into your Mac System yet.
2. You have installed the adapter. (Either one of the following: USB adapter in the USB port; Cardbus adapter in the PCMCIA slot, and finally, the PCI adapter in a PCI Slot.)
3. You have started-up the Mac and you are on the desktop.
4. Verify the CD came with Edimax Wireless 802.11n. You may have a Macintosh folder in CD.

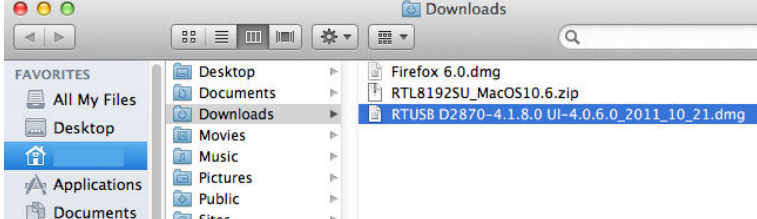
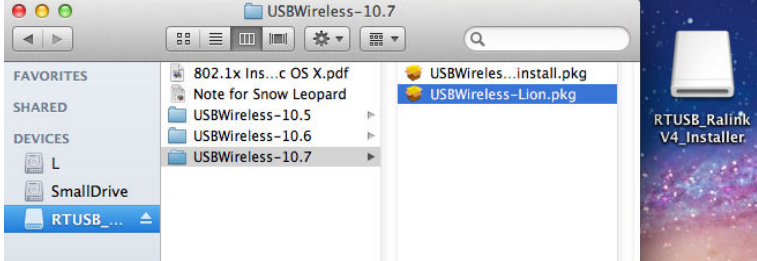
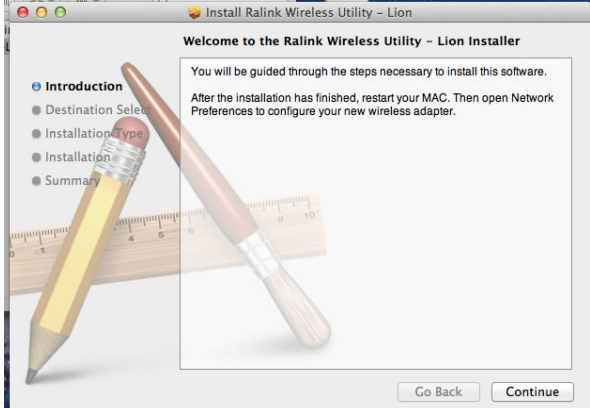
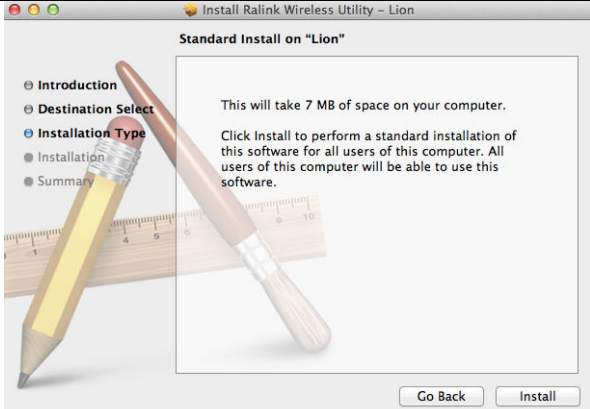

If there is no Macintosh driver in CD, please download the Mac driver from <http://us.edimax.com>

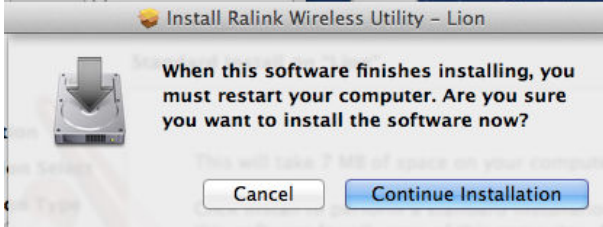
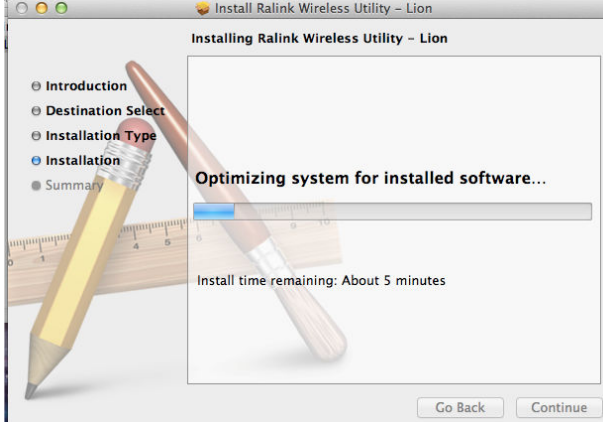
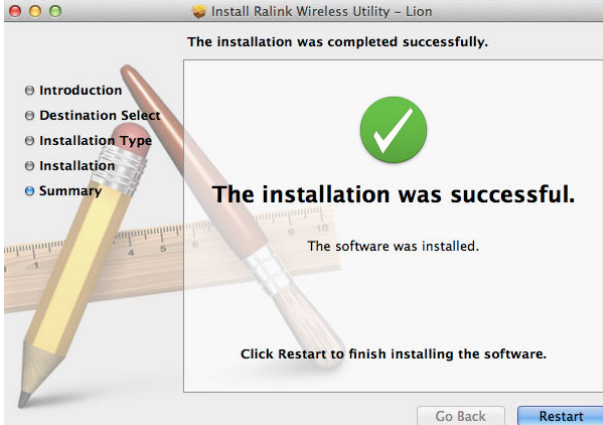


Wireless Adapter	Dual Band 5Ghz/2.4Ghz 802.11n Series	Driver	Manual
EW-7722UnD	Wireless 802.11a/n/g/b Dual-Band USB Adapter for Win XP 32/64, Vista 32/64, Win 7 32/64, Win8 32/64.	Win v3-02-2012	<a href="#">PDF</a>
<b>Wireless Adapter</b>	<b>2.4Ghz 802.11n Series</b>	<b>Driver</b>	<b>Manual</b>
EW-7811Un, EW-7722UTn v2.0	802.11n Nano USB Driver for Win XP 32/64, Vista 32/64, Win 7 32/64, Win8 32/64	Win v11-08-2012	<a href="#">PDF</a>
EW-7811Un, EW-7722UTn v2.0	802.11n Nano USB Driver/Utility for Mac OS <a href="#">10.4</a> / <a href="#">10.5</a> / <a href="#">10.6</a> / <a href="#">10.7</a> / <a href="#">10.8</a> (Beta)	As Left	<a href="#">PDF</a>
EW-7722UnD, EW-7718Un, EW-7717Un, EW-7711UAn, EW-7711UMn, EW-7711USn, EW-7722UTn v1.0	802.11n USB Driver/Utility for Win XP 32/64, Vista 32/64, Win 7 32/64, Win8 32/64	Win v11-29-2012	<a href="#">PDF</a>
<b>EW-7722UnD, EW-7718Un, EW-7717Un, EW-7711UAn, EW-7711UMn, EW-7711USn, EW-7722UTn v1.0</b>	802.11n USB Driver/Utility for Mac OS 10.4 / 10.5 / 10.6 / 10.7 / 10.8	Mac v10-01-2012	<a href="#">PDF</a>
EW-7128Gn, EW-7711In, EW-7722In, EW-7728In, EW-7727In, EW-7708Pn	802.11n PCI Driver/Utility for Win XP 32/64, Vista 32/64, Win 7 32/64, Win8 32/64	Win v11-29-2012	<a href="#">PDF</a>
EW-7128Gn, EW-7711In, EW-7722In, EW-7728In, EW-7727In, EW-7708Pn	802.11n PCI Driver/Utility for Mac OS 10.3 / 10.4 / 10.5	Mac v05-18-2010	<a href="#">PDF</a>

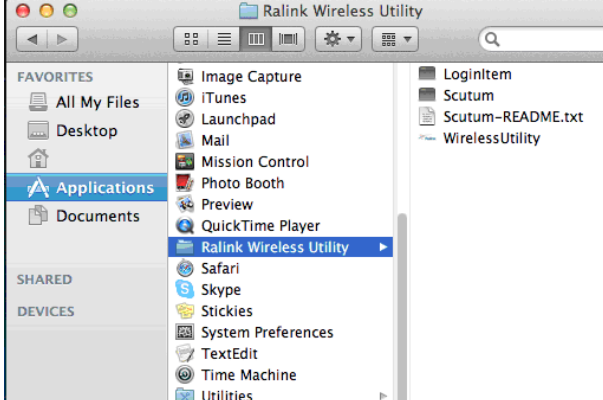
© 2012 Edimax Computer  
3350 Scott Blvd., Building #15  
Santa Clara, California 95054, USA  
Phone 408-496-1105 • Fax 408-980-1530  
[www.edimax.us](http://www.edimax.us)

## Step 1. Install the Wireless Driver and Utility.

	<p>If you have CD disc, please insert it to your Mac computer.</p> <p>If you download the driver, please find the driver file in your Downloads folder.</p>
	<p>Double click on the .dmg file.</p> <p>You will see the new device "RTUSB_.." listed under "Devices". You also may find a new disc drive labeled "RTUSB_Ralink_V4_Installer".</p> <p>Go into the USBWireless-10.x folder. Double click on the package file.</p>
	<p>The installer starts.</p> <p>Click on "Continue".</p>
	<p>Click on "Install".</p>
	<p>Type in the correct administrator username and password in order to install the application.</p> <p>Click on "Install Software".</p>

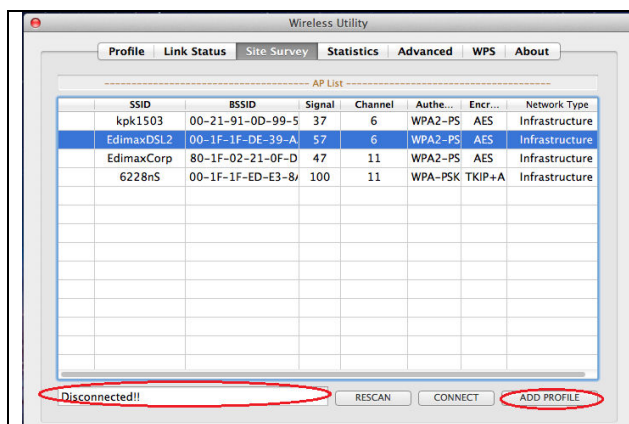
		<p>Click on "Continue Installation".</p>
		<p>Wait for a few minutes.</p>
		<p>Click on Restart.</p>

Step 2. After Macintosh Restarts, please verify the Wireless Utility has been installed.

		<p>Go to Applications folder.</p> <p>You should see the Ralink Wireless Utility folder. The Wireless Utility has installed successfully in your computer.</p>
---	--	---

Step 3. Insert the Edimax Wireless Adapter into a USB port of your Mac system.

Mac will automatically launch the Ralink Wireless Utility.

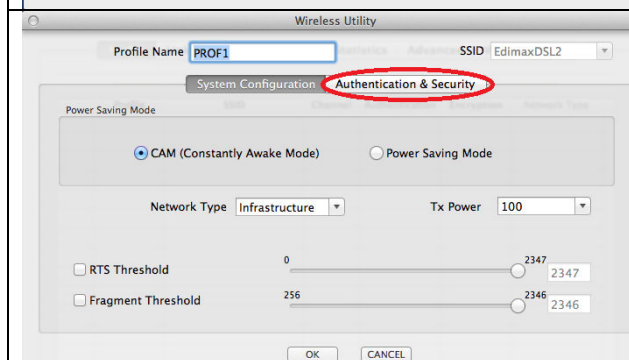


The “Site Survey” tab displays available wireless networks.

If you do not see your wireless network, click on “Rescan”.

Please note the information box next to “Rescan”. It should say “Disconnected”. If it says “No Device”, please unplug the Edimax USB Wireless Adapters and re-plug it in.

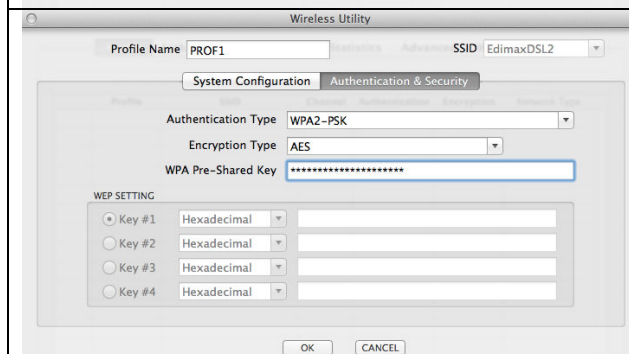
Select your wireless network, click on “ADD PROFILE”.



The default Profile name is “PROF1”. It is optional for you to change to a different name.

The SSID on the top left corner should be the name of your wireless network.

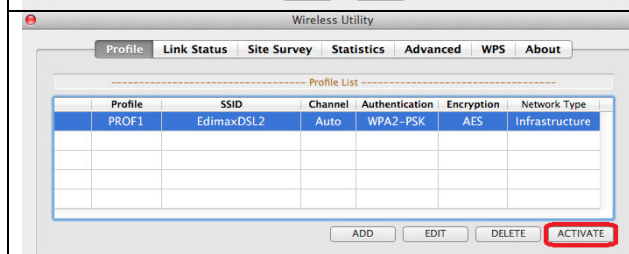
Click on “Authenticaton & Security” tab.



Type in the correct wireless security password into the WPA Pre-Shared Key.

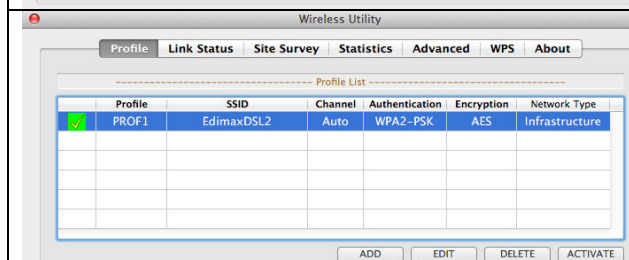
If your network uses WEP encryption, type in your wireless security key into Key #1 box.

Click OK.



The new profile is created under “Profile” tab.

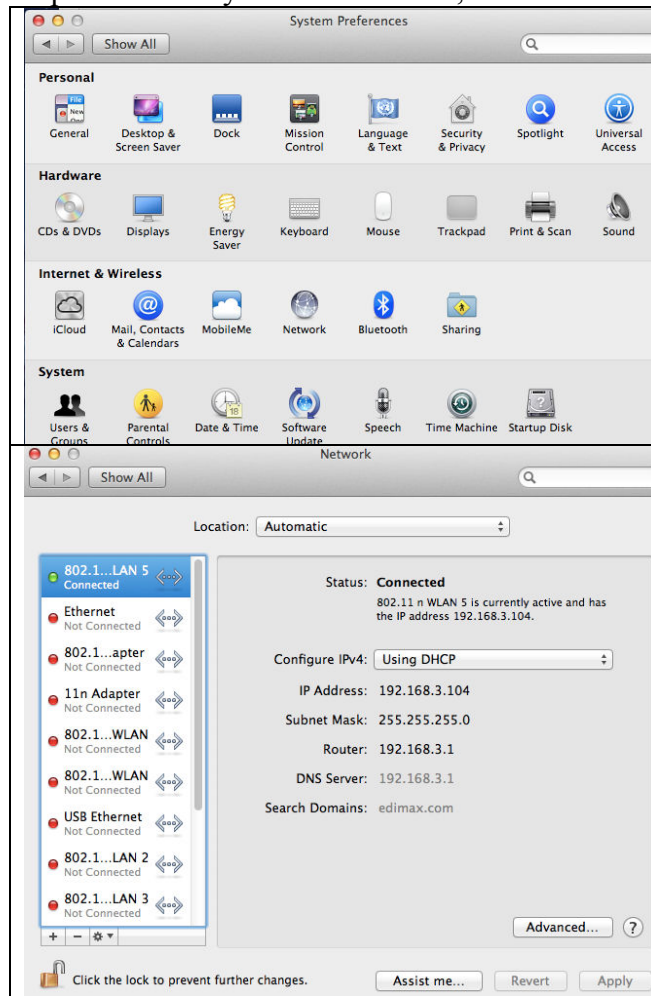
Select the profile, click on “Activate”



Wait a while and you should see the Green check show up.

You can close the Wireless Utility by clicking on the

#### Step 4. Check System Preferences, Network.



Go to System Preference.

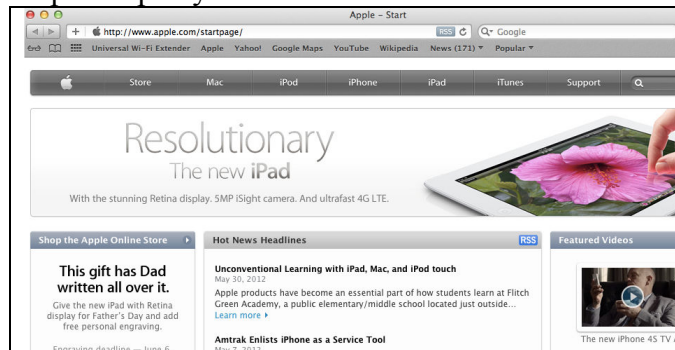
Double click on Network.

You should have a green dot in front of the 802.11n WLAN adapter. It received a DHCP IP address from your Wireless Network.

If your IP address is 169.254.x.x, the wireless connection is not successful. Please verify the Wireless security password of your network.

The green check in the Ralink Wireless Utility could turn on even though the wireless security password is not correct.

#### Step 5. Open your Browser



If you see a correct IP address in Network Preference, the wireless connection should be successful. You can close the Network Preference. Go ahead to open your web browser to get on Internet.