

PARTS CATALOG

LBP3000/2900

Canon

Mar 10 2005

PREFACE

This Parts Catalog contains listings of parts used

Diagrams are provided with the listings to aid the service technician in identifying clearly, the item to be ordered.

Whenever ordering parts, consult this Parts Catalog for all of the information pertaining to each item. Be sure to include, in the Parts Request, the full item description, the item part number, and the quantity.

COPYRIGHT (C) 1999 CANON INC.

Use of this manual should be
strictly supervised to avoid
disclosure of confidential
information.

Contents

Parts List Index

LBP3000/2900	1-1
--------------------	-----

LBP3000/2900

A	ASSEMBLY LOCATION DIAGRAM	2-1
001	DISK UNIT	2-2
100	EXTERNAL COVERS	2-4
101	INTERNAL COMPONENTS 1	2-6
102	INTERNAL COMPONENTS 2	2-8
103	INTERNAL COMPONENTS 3	2-10
104	BASE PLATE ASS'Y	2-12
310	PAPER PICK-UP ASS'Y	2-14
810	FIXING ASS'Y	2-16

NUMERICAL INDEX

LBP3000/2900

PARTS NUMBER	FIGURE & KEY NO.	PARTS NUMBER	FIGURE & KEY NO.	PARTS NUMBER	FIGURE & KEY NO
FC1-4820-000	100 - 6	RC1-2136-000	810 - 12	RM1-2391-000	100 - 4
NPN	001 -	RC1-2139-000	810 - 13	RM1-2393-000	100 - 3
NPN	100 -	RC1-6194-000	100 - 1	RM1-2395-000	104 - 3
NPN	101 -	RC1-6199-000	100 - 9	RM1-2397-000	104 - 4
NPN	102 -	RC1-6214-000	100 - 12	RM1-2399-000	100 - 3
NPN	103 -	RC1-6215-000	100 - 7	RM1-2880-000	103 - 25
NPN	104 -	RC1-6217-000	100 - 6	RM1-2881-000	103 - 25
RA0-1019-000	103 - 1	RC1-6221-000	100 - 8	RM1-3125-000	103 - 25
RA0-1060-000	101 - 9	RC1-6223-000	103 - 10	RM1-3126-000	103 - 25
RC1-1953-000	103 - 2	RC1-6223-000	103 - 24	RU5-0173-000	103 - 13
RC1-1954-000	103 - 3	RH9-1015-000	101 - 12	RU5-0174-000	103 - 14
RC1-1955-000	103 - 4	RH9-1163-000	101 - 13	RU5-0175-000	103 - 15
RC1-1956-000	103 - 5	RH9-1164-000	101 - 12	RU5-0176-000	103 - 16
RC1-1957-000	103 - 6	RH9-1165-000	101 - 12	RU5-0177-000	103 - 17
RC1-1959-000	103 - 7	RH9-1166-000	101 - 12	RU5-0178-000	103 - 18
RC1-1960-000	310 - 1	RH9-1167-000	101 - 12	RU5-0179-000	103 - 19
RC1-1964-000	103 - 8	RH9-1169-000	101 - 12	RU5-0180-000	310 - 23
RC1-1987-000	104 - 1	RK2-0107-000	101 - 4	RU5-0185-000	810 - 18
RC1-1989-000	310 - 2	RK2-0108-000	310 - 16	RU5-0186-000	810 - 19
RC1-1990-000	310 - 3	RK2-1025-000	001 - 1	RU5-2173-000	103 - 20
RC1-1993-000	310 - 4	RK2-1026-000	001 - 1	RU5-2174-000	103 - 21
RC1-1994-000	310 - 5	RK2-1027-000	001 - 1	RU5-2174-000	310 - 24
RC1-1996-000	310 - 6	RK2-1136-000	001 - 1	RU5-2177-000	102 - 8
RC1-1999-000	102 - 1	RK2-1137-000	001 - 1	RU5-2178-000	810 - 20
RC1-2005-000	101 - 2	RL1-0266-000	310 - 17	VD7-1791-002	101 - FU101
RC1-2007-000	102 - 2	RL1-0268-000	310 - 18	XA9-1420-000	101 - 14
RC1-2012-000	310 - 7	RL1-0269-000	101 - 1	XA9-1420-000	102 - 9
RC1-2029-000	310 - 19	RL1-0270-000	810 - 14	XA9-1420-000	103 - 22
RC1-2039-000	310 - 8	RL1-0274-000	103 - 11	XA9-1469-000	100 - 10
RC1-2040-000	310 - 9	RL1-0275-000	104 - 2	XA9-1469-000	103 - 26
RC1-2041-000	310 - 10	RL1-0905-000	100 - 2	XA9-1495-000	101 - 15
RC1-2042-000	310 - 11	RL1-0908-000	100 - 5	XA9-1495-000	102 - 10
RC1-2043-000	310 - 12	RM1-0171-000	102 - 6	XA9-1495-000	103 - 23
RC1-2044-000	310 - 13	RM1-0634-000	103 - 12	XA9-1495-000	104 - 6
RC1-2049-000	310 - 14	RM1-0640-000	104 - 5	XA9-1500-010	100 - 11
RC1-2061-000	310 - 15	RM1-0641-000	310 -	XA9-1500-010	102 - 11
RC1-2066-000	810 - 1	RM1-0642-000	310 - 20	XA9-1503-000	310 - 25
RC1-2067-000	810 - 2	RM1-0644-000	310 - 21	XB2-6400-607	101 - 17
RC1-2069-000	810 - 3	RM1-0645-000	310 - 22	XB2-8300-609	810 - 17
RC1-2070-000	810 - 4	RM1-0647-000	101 - 5	XB4-5401-009	101 - 16
RC1-2079-000	810 - 5	RM1-0648-000	101 - 6	XB4-5401-009	310 - 26
RC1-2097-000	810 - 7	RM1-0649-000	810 -		
RC1-2098-000	810 - 8	RM1-0650-040	810 - 15		
RC1-2101-000	810 - 9	RM1-0651-020	810 - 16		
RC1-2102-000	810 - 10	RM1-0655-000	810 -		
RC1-2103-000	810 - 11	RM1-0656-040	810 - 15		
RC1-2106-020	101 - 3	RM1-0658-000	101 - 7		
RC1-2108-000	810 - 6	RM1-0806-050	102 - 7		
RC1-2116-020	102 - 3	RM1-0807-020	101 - 8		
RC1-2117-000	103 - 9	RM1-0808-020	101 - 8		
RC1-2120-000	102 - 4	RM1-0809-000	101 - 10		
RC1-2121-020	102 - 5	RM1-0810-000	101 - 11		

NUMERICAL INDEX
LBP3000/2900

PARTS NUMBER	FIGURE & KEY NO.	PARTS NUMBER	FIGURE & KEY NO.	PARTS NUMBER	FIGURE & KEY NO

LBP3000/2900

100V	R72-8544-00DLJA
120V	R72-8554-00DLHA
220V	R72-8558-00KMXA
220V	R72-8568-00KMYA
220V	R72-8658-00KMKA
220V	R72-8668-00DMPA

Contents

A	ASSEMBLY LOCATION DIAGRAM	2-1
001	DISK UNIT	2-2
100	EXTERNAL COVERS	2-4
101	INTERNAL COMPONENTS 1	2-6
102	INTERNAL COMPONENTS 2	2-8
103	INTERNAL COMPONENTS 3	2-10
104	BASE PLATE ASS'Y	2-12
310	PAPER PICK-UP ASSY	2-14
810	FIXING ASS'Y	2-16

FIGURE A
ASSEMBLY LOCATION DIAGRAM

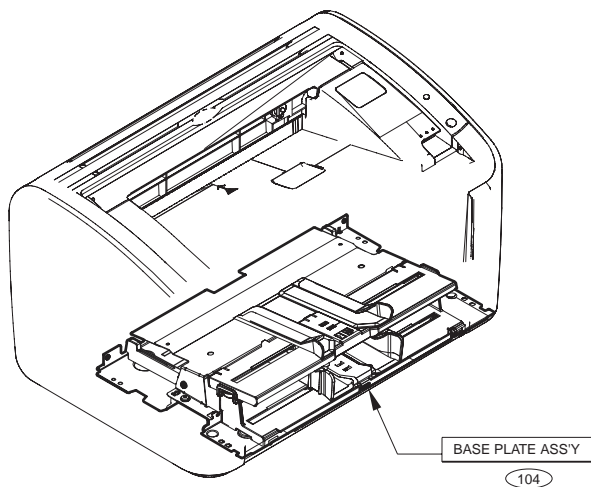
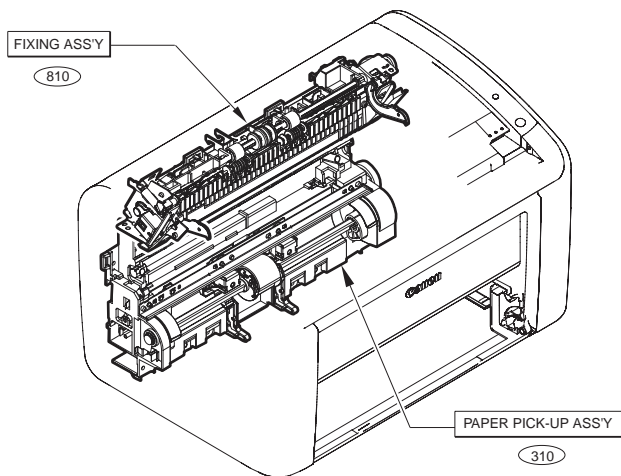


FIGURE 001
DISK UNIT

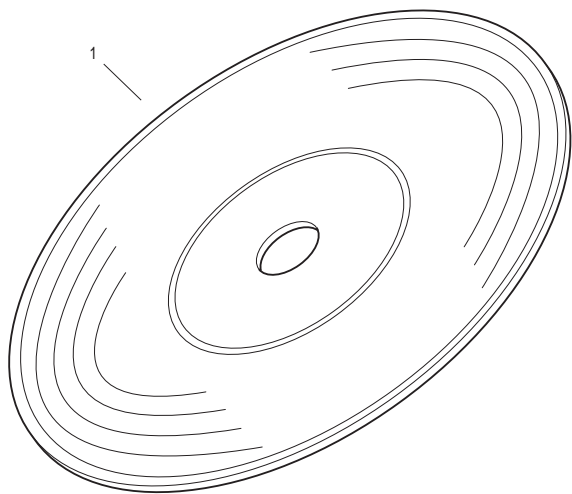


FIGURE & KEY NO.	PARTS NUMBER	R A N K	Q'TY	DESCRIPTION	SERIAL NUMBER/ REMARKS	S V C
Fig.001	NPN		RF	DISK UNIT		
1	RK2-1137-000		1	CD-ROM, USER SOFTWARE	LBP2900 KMKA, LMLA, LMMA, LMN A English/French/Italian/ German/Spanish/Russian	
1	RK2-1136-000		1	CD-ROM, USER SOFTWARE	LBP2900 LMPA Simplified Chinese	
1	RK2-1026-000		1	CD-ROM, USER SOFTWARE	LBP3000 JLHA, KMXA, LMCA, LMDA , LMEA English/French/ Italian/German/Spanish/ Russian	
1	RK2-1027-000		1	CD-ROM, USER SOFTWARE	LBP3000 KMYA English/ Simplified Chinese/ Traditional Chinese/ Korean/Spanish/Thai/ Portuguese	
1	RK2-1025-000		1	CD-ROM, USER SOFTWARE	LBP3000 LLJA Japanese	

FIGURE 100
EXTERNAL COVERS

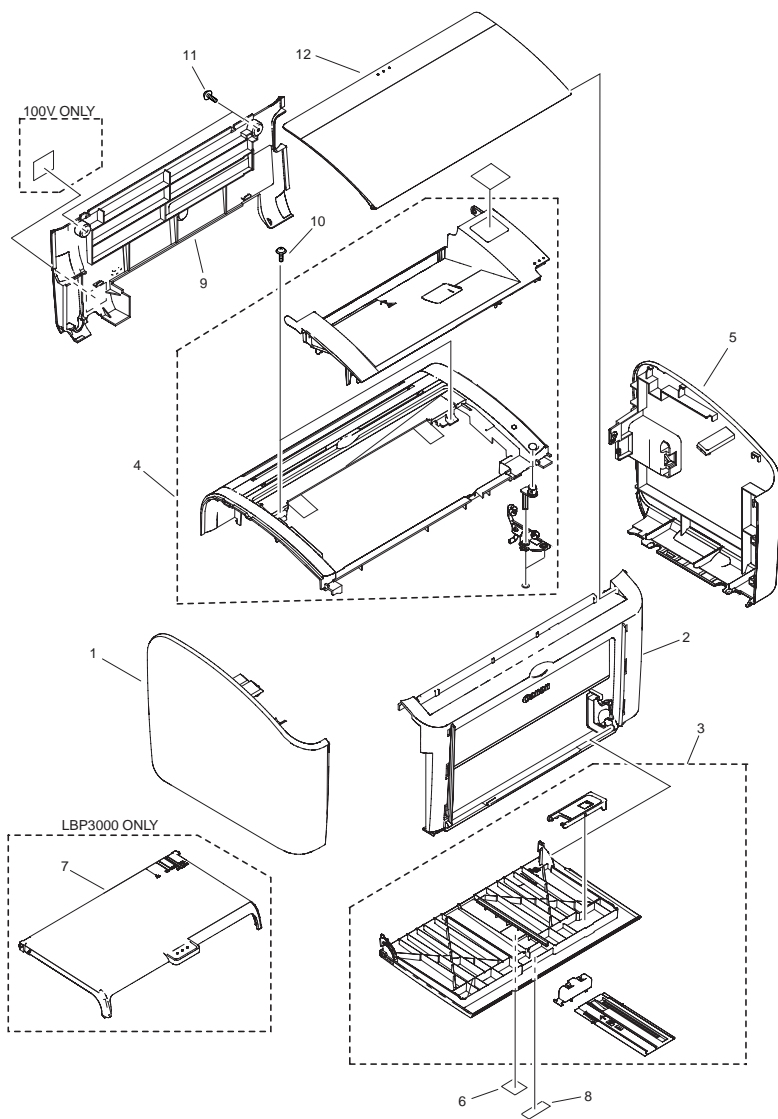


FIGURE & KEY NO.	PARTS NUMBER	R A N K	Q'TY	DESCRIPTION	SERIAL NUMBER/ REMARKS	S V C
Fig.100	NPN		RF	EXTERNAL COVERS		
1	RC1-6194-000		1	COVER, LEFT		
2	RL1-0905-000		1	COVER, FRONT		
3	RM1-2399-000		1	PAPER PICK-UP TRAY ASS'Y	LBP2900	
3	RM1-2393-000		1	PAPER PICK-UP TRAY ASS'Y	LBP3000	
4	RM1-2391-000		1	FACE-DOWN COVER ASS'Y		
5	RL1-0908-000		1	RIGHT COVER ASS'Y		
6	FC1-4820-000		1	EMBLEM, SATERA	100V	
6	RC1-6217-000		1	EMBLEM, LASER SHOT	EXCEPT 100V	
7	RC1-6215-000		1	COVER, MULTI-PURPOSE, TRAY	LBP3000	
8	RC1-6221-000		1	EMBLEM		
9	RC1-6199-000		1	PANEL, REAR		
10	XA9-1469-000		2	SCREW, TP,M3X6		
11	XA9-1500-010		2	SCREW, S, M3X8		
12	RC1-6214-000		1	TRAY, PAPER DELIVERY		

FIGURE 101
INTERNAL COMPONENTS 1

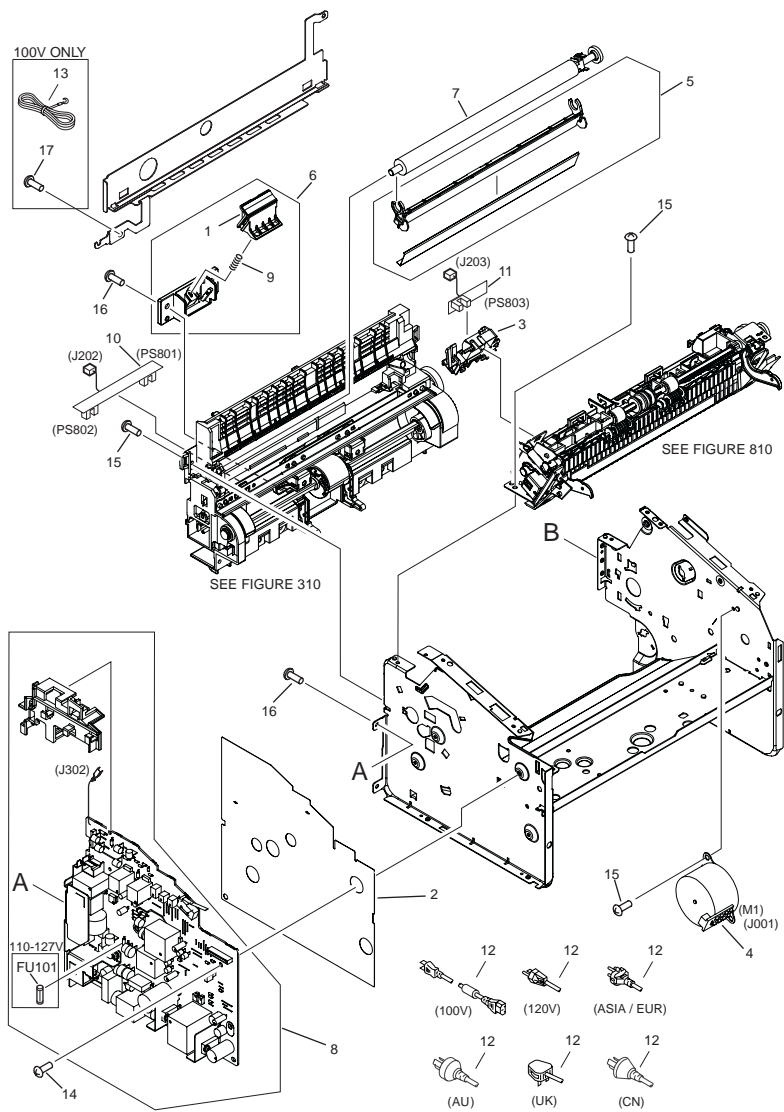


FIGURE & KEY NO.	PARTS NUMBER	R A N K	Q'TY	DESCRIPTION	SERIAL NUMBER/ REMARKS	S V C
Fig.101	NPN		RF	INTERNAL COMPONENTS 1		
1	RL1-0269-000		1	PAD, SEPARATION		
2	RC1-2005-000		1	SHEET, INSULATING		
3	RC1-2106-020		1	GUIDE, AC CABLE		
4	RK2-0107-000		1	MOTOR, STEPPING	M1,J001	
5	RM1-0647-000		1	TRANSFER GUIDE ASS'Y		
6	RM1-0648-000		1	SEPARATION PAD ASS'Y		
7	RM1-0658-000		1	TRANSFER ROLLER ASS'Y		
8	RM1-0807-020		1	POWER SUPPLY ASS'Y	100V/120V J302 SW101,SW301	
8	RM1-0808-020		1	POWER SUPPLY ASS'Y	ASIA/AU/EUR/UK/CN J302 SW101,SW301	
9	RA0-1060-000		1	SPRING, COMPRESSION		
10	RM1-0809-000		1	PAPER SENSOR PCB ASS'Y	J202	
11	RM1-0810-000		1	DELIVERY SENSOR PCB ASS'Y	J203	
12	RH9-1015-000		1	POWER CORD, 100V	100V	
12	RH9-1164-000		1	POWER CORD	120V	
12	RH9-1165-000		1	POWER CORD	ASIA/EUR	
12	RH9-1169-000		1	POWER CORD	AU	
12	RH9-1166-000		1	POWER CORD	CN	
12	RH9-1167-000		1	POWER CORD	UK	
13	RH9-1163-000		1	WIRE, GROUNDING	100V	
14	XA9-1420-000		4	SCREW, WWASHER, M3X8		
15	XA9-1495-000		12	SCREW, RS, M3X6		
16	XB4-5401-009		2	SCREW, TAP, M4X10		
17	XB2-6400-607		1	SCREW, WWASHER, M4X6 (S)	100V	
FU101	VD7-1791-002	N	1	FUSE, 125V, 10A	100V/120V	

FIGURE 102
INTERNAL COMPONENTS 2

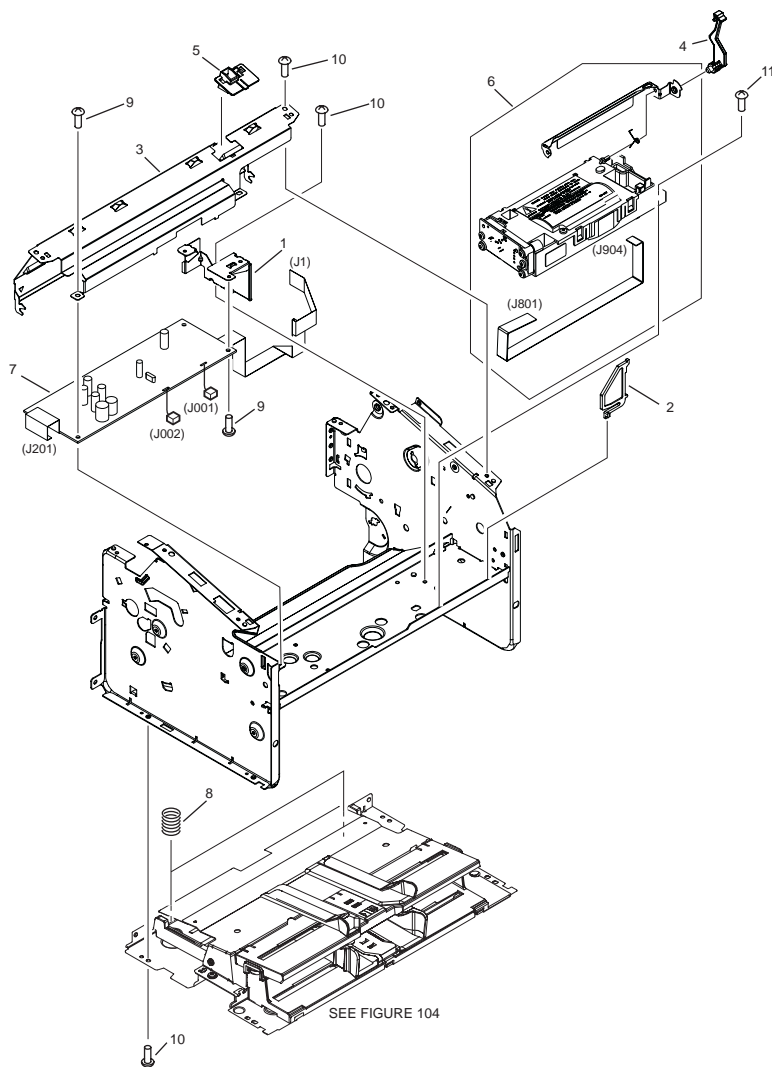


FIGURE & KEY NO.	PARTS NUMBER	R A N K	Q'TY	DESCRIPTION	SERIAL NUMBER/ REMARKS	S V C
Fig.102	NPN		RF	INTERNAL COMPONENTS 2		
1	RC1-1999-000	N	1	CROSSMEMBER, ENGINE CONTROLLER		
2	RC1-2007-000		1	GUIDE, FLEXIBLE FLAT CABLE		
3	RC1-2116-020		1	COVER, SCANNER		
4	RC1-2120-000		1	ARM, SHUTTER		
5	RC1-2121-020		1	HOLDER, ARM		
6	RM1-0171-000		1	LASER SCANNER ASS'Y		
7	RM1-0806-050		1	ENGINE CONTROL PCB ASS'Y	J1,J001,J002,J201	
8	RU5-2177-000		2	SPRING, COMPRESSION		
9	XA9-1420-000		3	SCREW, WWASHER, M3X8		
10	XA9-1495-000		8	SCREW, RS, M3X6		
11	XA9-1500-010		4	SCREW, S, M3X8		

FIGURE 103
INTERNAL COMPONENTS 3

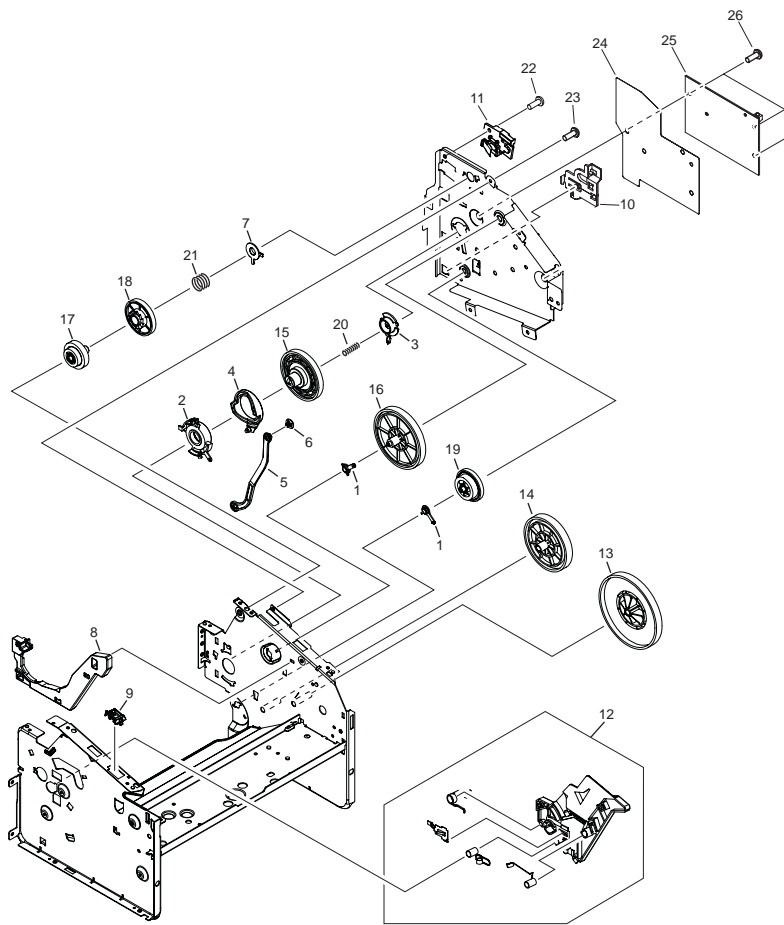


FIGURE & KEY NO.	PARTS NUMBER	R A N K	Q'TY	DESCRIPTION	SERIAL NUMBER/ REMARKS	S V C
Fig.103	NPN		RF	INTERNAL COMPONENTS 3		
1	RA0-1019-000		2	BUSHING		
2	RC1-1953-000		1	BUSHING		
3	RC1-1954-000		1	BUSHING		
4	RC1-1955-000		1	CAM, COUPLING		
5	RC1-1956-000		1	LINK, DOOR		
6	RC1-1957-000		1	STOPPER		
7	RC1-1959-000		1	BUSHING		
8	RC1-1964-000		1	GUIDE, CARTRIDGE, RIGHT		
9	RC1-2117-000		1	COVER, SWITCH		
10	RC1-6223-000		1	SHEET, INSULATING		
11	RL1-0274-000		1	HOLDER, DIODE		
12	RM1-0634-000		1	CARTRIDGE GUIDE LEFT ASS'Y		
13	RU5-0173-000		1	GEAR, 159T/90T		
14	RU5-0174-000		1	GEAR, 117T		
15	RU5-0175-000		1	GEAR, 108T		
16	RU5-0176-000		1	GEAR, 129T		
17	RU5-0177-000		1	GEAR, 27T/18T		
18	RU5-0178-000		1	GEAR, 73T		
19	RU5-0179-000		1	GEAR, 66T/25T		
20	RU5-2173-000		1	SPRING, COMPRESSION		
21	RU5-2174-000		1	SPRING, COMPRESSION		
22	XA9-1420-000		1	SCREW, W/WASHER, M3X8		
23	XA9-1495-000		6	SCREW, RS, M3X6		
24	RC1-6223-000		1	SHEET, INSULATING		
25	RM1-3126-000		1	VIDEO CONTROLLER PCB ASS'Y	LBP2900 CN	
25	RM1-3125-000		1	VIDEO CONTROLLER PCB ASS'Y	LBP2900 EXCEPT CN	
25	RM1-2881-000		1	VIDEO CONTROLLER PCB ASS'Y	LBP3000 CN	
25	RM1-2880-000		1	VIDEO CONTROLLER PCB ASS'Y	LBP3000 EXCEPT CN	
26	XA9-1469-000		3	SCREW, TP,M3X6		

FIGURE 104
BASE PLATE ASS'Y

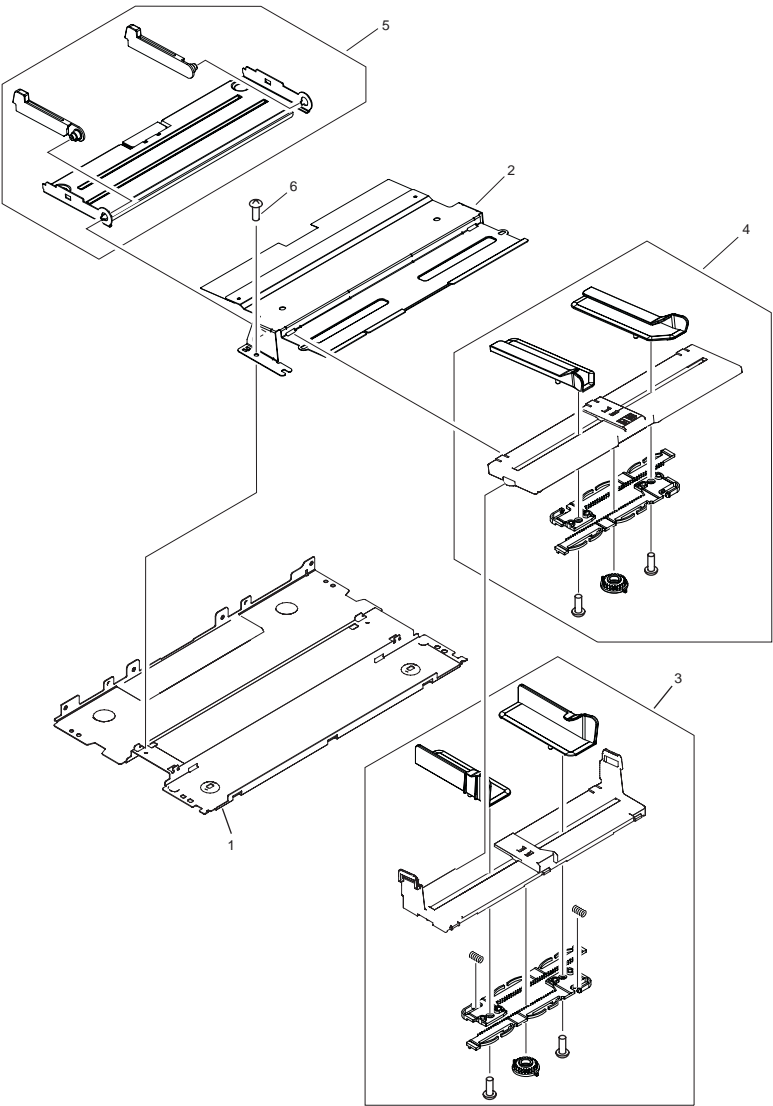


FIGURE & KEY NO.	PARTS NUMBER	R A N K	Q'TY	DESCRIPTION	SERIAL NUMBER/ REMARKS	S V C
Fig.104	NPN		RF	BASE PLATE ASS'Y		
1	RC1-1987-000		1	BASE PLATE		
2	RL1-0275-000		1	PLATE, FEED GUIDE		
3	RM1-2395-000		1	CENTERPLATE GUIDE RAIL ASS'Y		
4	RM1-2397-000		1	FEED GUIDE RAIL ASS'Y		
5	RM1-0640-000		1	LIFTING PLATE ASS'Y		
6	XA9-1495-000		2	SCREW, RS, M3X6		

FIGURE 310
PAPER PICK-UP ASS'Y

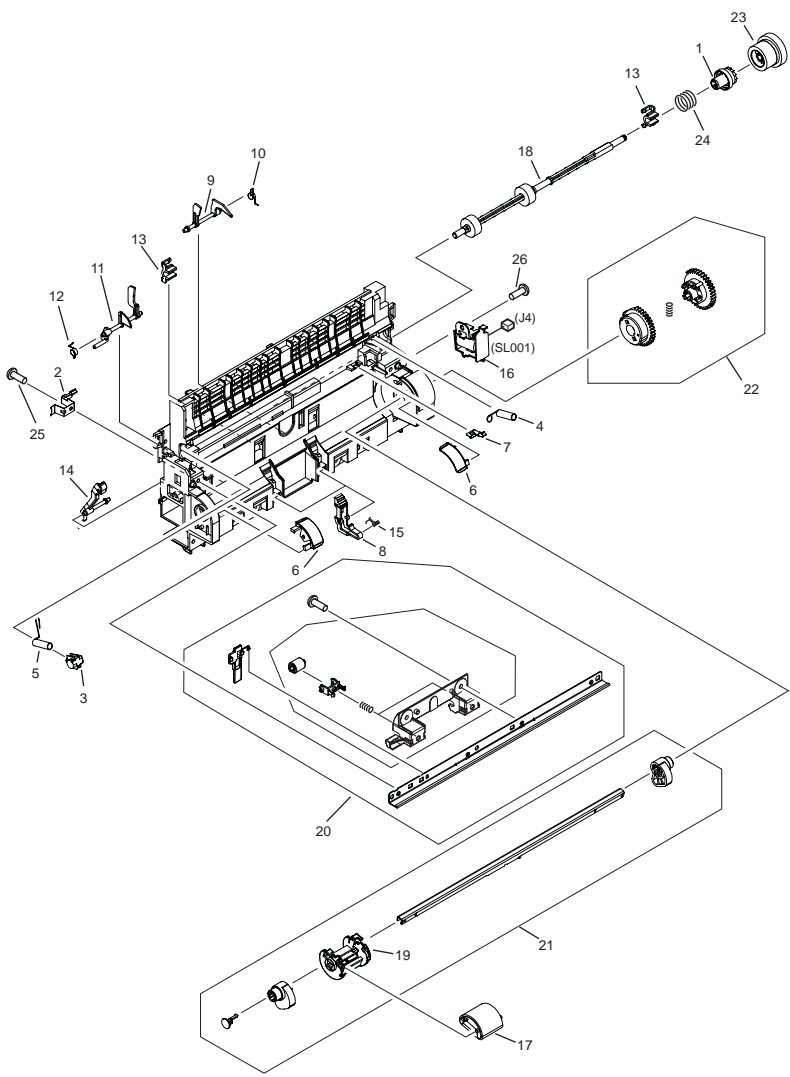


FIGURE & KEY NO.	PARTS NUMBER	R A N K	Q'TY	DESCRIPTION	SERIAL NUMBER/ REMARKS	S V C
Fig.310	RM1-0641-000		1	PAPER PICK-UP ASS'Y	SL001,J4	
1	RC1-1960-000		1	RATCHET		
2	RC1-1989-000		1	PLATE,TRANSFER GROUNDING,FRONT		
3	RC1-1990-000		1	BUSHING		
4	RC1-1993-000		1	SPRING, TORSION		
5	RC1-1994-000		1	SPRING, TORSION		
6	RC1-1996-000		2	COVER, PICK-UP CAM		
7	RC1-2012-000		1	SPRING, LEAF		
8	RC1-2039-000		2	PAD, SUB		
9	RC1-2040-000		1	FLAG, REGIST. SENSOR		
10	RC1-2041-000		1	SPRING, TORSION		
11	RC1-2042-000		1	FLAG, PAPER WIDTH SENSOR		
12	RC1-2043-000		1	SPRING, TORSION		
13	RC1-2044-000		2	BUSHING		
14	RC1-2049-000		1	LEVER, CARTRIDGE DETECT		
15	RC1-2061-000		2	SPRING, TORSION		
16	RK2-0108-000		1	SOLENOID		
17	RL1-0266-000		1	ROLLER, PICK-UP		
18	RL1-0268-000		1	ROLLER, FEED		
19	RC1-2029-000		1	BASE, PICK-UP ROLLER		
20	RM1-0642-000		1	FEED CROSSMEMBER ASS'Y		
21	RM1-0644-000		1	PAPER PICK-UP SHAFT ASS'Y		
22	RM1-0645-000		1	PAPER PICK-UP GEAR ASS'Y		
23	RU5-0180-000		1	GEAR, 21T/29T		
24	RU5-2174-000		1	SPRING, COMPRESSION		
25	XA9-1503-000		2	SCREW, TAP, M3X6		
26	XB4-5401-009		1	SCREW, TAP, M4X10		

FIGURE 810
FIXING ASS'Y

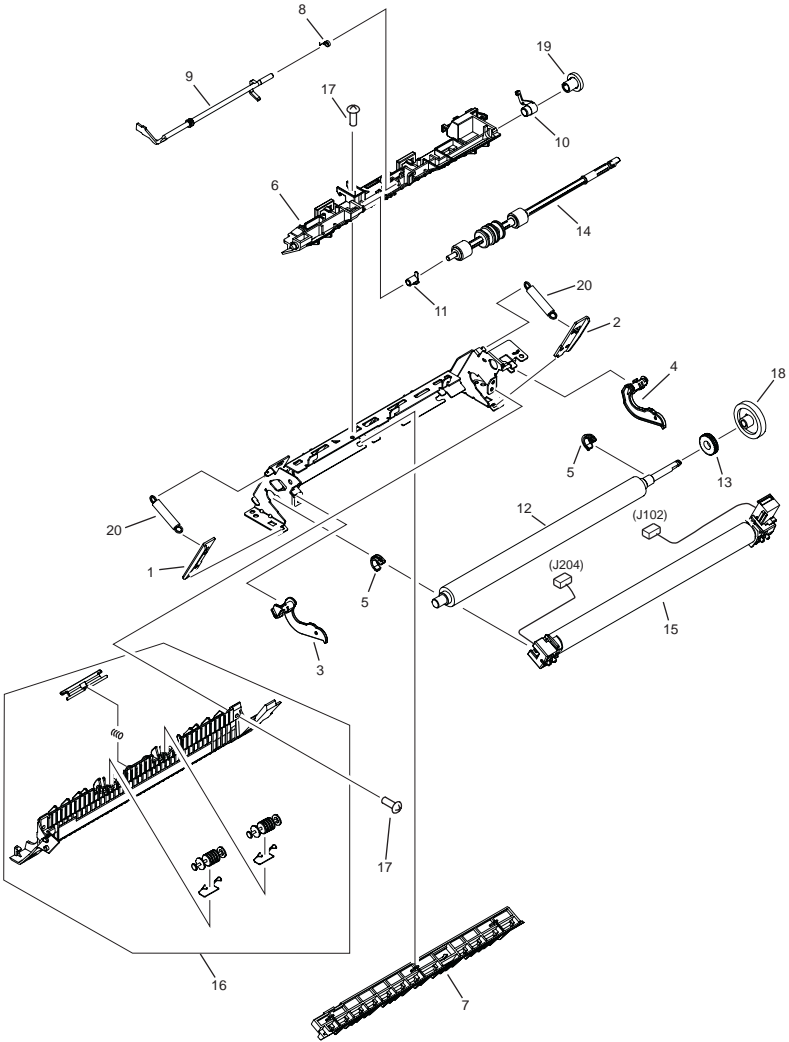


FIGURE & KEY NO.	PARTS NUMBER	R A N K	Q'TY	DESCRIPTION	SERIAL NUMBER/ REMARKS	S V C
Fig.810	RM1-0649-000		1	FIXING ASS'Y	100V/120V	
Fig.810	RM1-0655-000		1	FIXING ASS'Y	ASIA/AU/EUR/UK/CN	
1	RC1-2066-000		1	PLATE, PRESSURE, LEFT		
2	RC1-2067-000		1	PLATE, PRESSURE, RIGHT		
3	RC1-2069-000		1	LEVER, PRESSURE RELEASE, LEFT		
4	RC1-2070-000		1	LEVER, PRESSURE RELEASE, RIGHT		
5	RC1-2079-000		2	BUSHING		
6	RC1-2108-000		1	GUIDE, SEPARATION		
7	RC1-2097-000		1	GUIDE, ENTRANCE		
8	RC1-2098-000		1	SPRING, TORSION		
9	RC1-2101-000		1	LEVER, DELIVERY SENSOR		
10	RC1-2102-000		1	BUSHING		
11	RC1-2103-000		1	BUSHING		
12	RC1-2136-000		1	ROLLER, PRESSURE		
13	RC1-2139-000		1	BUSHING		
14	RL1-0270-000		1	ROLLER, FACE-DOWN		
15	RM1-0650-040		1	FIXING FILM ASS'Y	100V/120V J102,J204	
15	RM1-0656-040		1	FIXING FILM ASS'Y	ASIA/AU/EUR/UK/CN J102,J204	
16	RM1-0651-020		1	FIXING COVER ASS'Y		
17	XB2-8300-609		3	SCREW, RS, M3X		
18	RU5-0185-000		1	GEAR, 29T		
19	RU5-0186-000		1	GEAR, 14T		
20	RU5-2178-000		2	SPRING, TENSION		

Prepared by
OFFICE IMAGING PRODUCTS QUALITY ASSURANCE CENTER
CANON INC.

Canon